

PLAT "A"
A SUBDIVISION
OF PARTS OF SECTIONS 5 & 6 T.40S., R.39E.

File 8097

MARTIN COUNTY, FLORIDA
OWNED & DEVELOPED BY
THE LAND COMPANY OF FLORIDA
SCALE 1" = 100'
APRIL 1927.

STATE OF FLORIDA } ss.
County of Martin } ss.
This instrument was filed for record at
this 17 day of May
1927 and duly recorded on the 17 day of
May 1927 in Book 1
of Plate 687 Record Verified
at the Clerk's Office of the
Circuit Court
By *J. M. ...*

Dedication

KNOW ALL MEN BY THESE PRESENTS, that The Land Company of Florida, a corporation of the State of Maryland, licensed to do business in the State of Florida, owners of the following described property, to wit: Beginning at a point in the East line of the SE 1/4 of Section 6, Township 40 S., Range 39 E., said point being distant south 73.53 feet from the northeast corner of said SE 1/4 of Section 6; thence of an angle from north to west of 44°32'11", a distance of 819.38 feet to a point, which point is distant 120 feet of north from the center line of the Florida Western & Northern Railway as located and constructed across said SE 1/4 of Section 6; thence of an angle from north to east of 90° a distance of 2315 feet; thence of an angle from south to east of 90° a distance of 25.02 feet; thence of an angle from west to south of 126°22'26" a distance of 2346.70 feet to the northeast corner of said SE 1/4 of Section 6; thence at an angle from west to south of 89°05'15" a distance of 733.53 feet to the point of beginning; and Beginning at a point in the East line of the NE 1/4 of Section 6, Township 40 S., Range 39 E., said point being distant north 340.46 feet from the southwest corner of said NE 1/4 of Section 6; thence at an angle from south to west of 90° a distance of 1688.94 feet to a point; thence at an angle from south to west of 90° a distance of 1666.98 feet to a point on the south line of the NE 1/4 of said Section 6; thence at an angle from north to east of 53°37'26" a distance of 2346.70 feet to the southeast corner of said NE 1/4 of Section 6; thence north of an angle of 90°18' to the point of beginning; and Beginning at a point in the West line of the SW 1/4 of Section 5, Township 40 S., Range 39 E., said point being distant south 733.53 feet from the northeast corner of said SW 1/4 of Section 5; thence at an angle from north to east of 35°21'49" a distance of 812.61 feet to a point; thence at an angle from west to north of 90° a distance of 44.11 feet to a point in the north line of the said SW 1/4 of Section 5; thence at an angle from south to west of 11° a distance of 467.12 feet to the NW corner of the said SW 1/4 of Section 5; thence at a from east to south of 90°31'45" a distance of 733.53 feet to the point of beginning; and Beginning at a point in the West line of the NW 1/4 of Section 5, Township 40 S., Range 39 E., said point being distant north 340.46 feet from the southwest corner of said NW 1/4 of Section 5; thence at an angle from south to east of 33°55'26" a distance of 577.95 feet to a point in the south line of said NW 1/4 of Section 5; thence at an angle from north to west of 90° a distance of 467.12 feet to the southwest corner of said NW 1/4 of Section 5; thence at an angle from east to north of 89°59' a distance of 340.46 feet to the point of beginning; containing 89.92 Acres.

J. M. ...
President of The Land Company of Florida
Attest: *R. ...*
Secretary of The Land Company of Florida

Acknowledgement

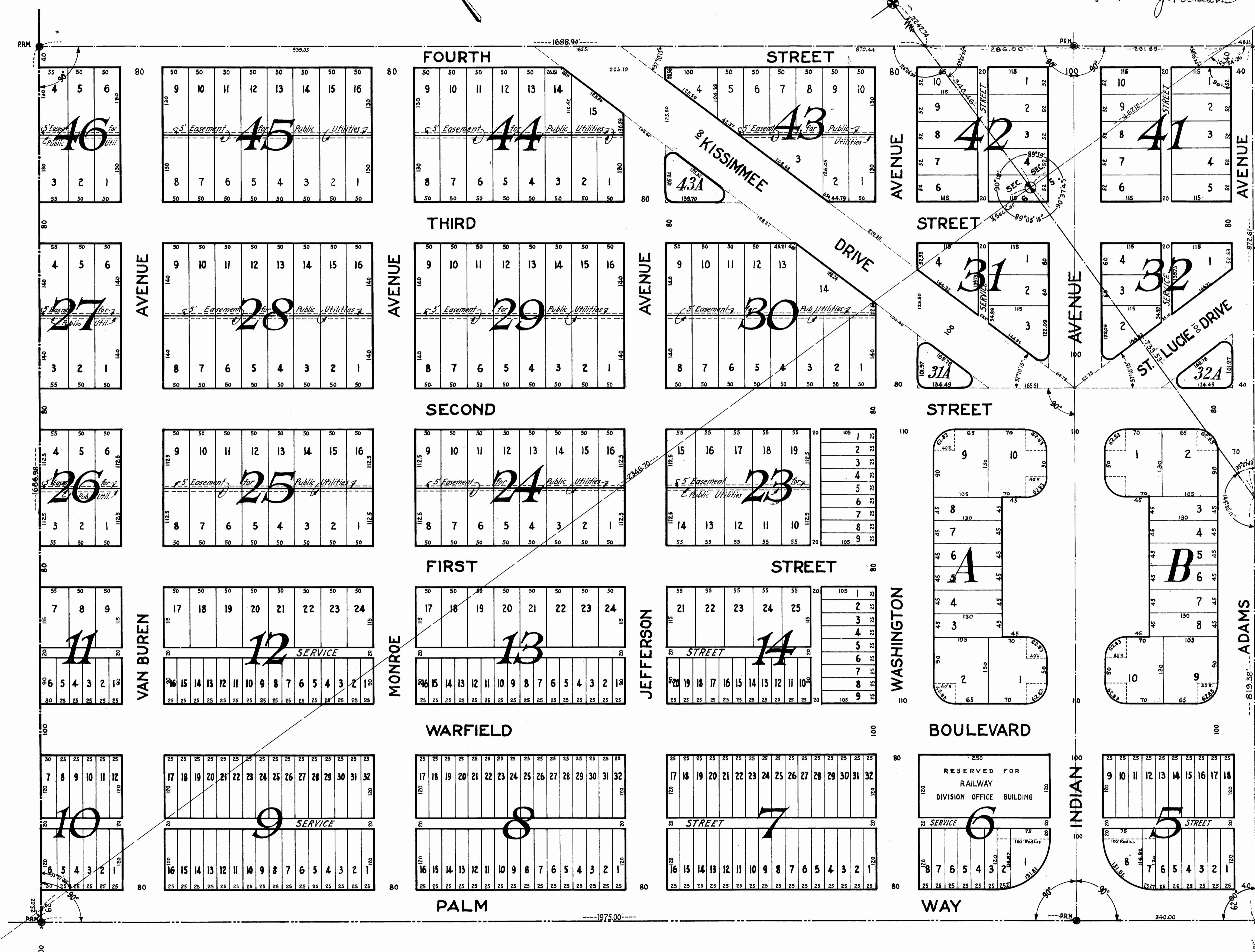
STATE OF FLORIDA } ss.
COUNTY OF MARTIN } ss.
I, the undersigned, an officer duly authorized to administer oaths and take acknowledgements, do hereby certify that on this day personally appeared before me S. DAVIES MARFIELD and ROBERT L. NUTT, president and secretary respectively of The Land Company of Florida, to me well known to be the persons described and who executed the foregoing instrument and acknowledged to and before me that they executed the same under and by authority of their board of directors for the uses and purposes therein expressed.
Witness my hand and seal this 14th day of May, A.D. 1927
S. G. MacFarland
Notary Public
My Commission Expires April 11, 1929

Affidavit

STATE OF FLORIDA } ss.
COUNTY OF MARTIN } ss.
I hereby certify that I have surveyed and platted the tract of land shown on the attached plat as PLAT "A" and that said plat is a correct representation thereof to the best of my knowledge and belief and that permanent reference monuments have been placed as provided by law.
A. H. Peppard
Fla. State Engr. Cert. No. 517
Subscribed and sworn to before me this 22nd day of May, 1927
S. G. MacFarland
Notary Public
My Commission Expires April 11, 1929

NOTE: All Radii 15 feet unless otherwise shown.

APPROVED BY:
Wm. H. ...
County Surveyor



FLORIDA WESTERN & NORTHERN RY.